

Regional Childcare Initiatives

BUSINESS NAVIGATOR ALLIANCE OF SOUTHCENTRAL & SOUTHEASTERN ILLINOIS

May 26, 2022

- **Jeff Andrews, Business of Child Care**
Current state of childcare in our region
Working with local communities
- **Sarah Zerrusen, Stevens Industries**
Launch of new on-site childcare service
- **Matt Cekander, Doehring, Winders & Co. LLP**
Potential childcare tax credits for businesses and employees

www.ILBusinessNavigators.com

1

Business Navigator Alliance of Southcentral and Southeastern Illinois

- Regional collaboration for the Community Navigator Program
- Purpose: provide professional outreach and technical assistance for local, state, and federal economic relief programs
- Mission: to ensure that small businesses in our region are competitive in applying for necessary resources
- Goal: position local businesses for success by acceleration business recovery and growth

COLES Together
SULLIVAN ILLINOIS CHAMBER & ECONOMIC DEVELOPMENT
The Alliance (Highland Regional Growth Alliance)
CCDA Crawford County Development Association
MARSHALL AREA CHAMBER OF COMMERCE
PEDCO

2

BUSINESS NAVIGATOR ALLIANCE OF SOUTHCENTRAL & SOUTHEASTERN ILLINOIS

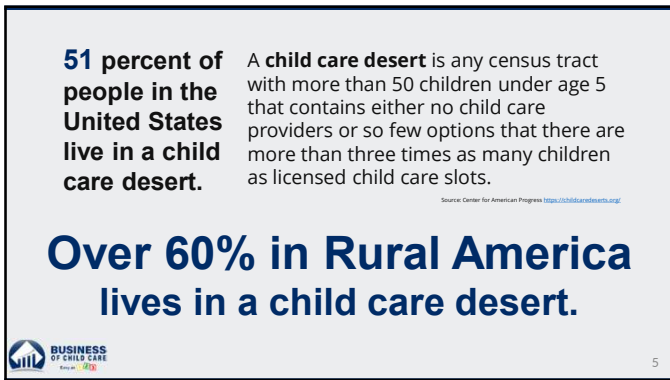
Webinars
Outreach Events
Virtual Office Hours
Offer 1-on-1 Technical Assistance

www.ILBusinessNavigators.com

3



4



5



6



7



8

What about Southern Illinois?

6,814

WE ARE HIRING

Businesses Need
More Employees &
Reduced Absenteeism

Parents Need
Drop-in Care
2nd Shift Care
Infant / Toddler Slots

Providers Need
Earning Potential
Professional Supports

BUSINESS OF CHILD CARE
IICAM Statistics - Licensed Child Care Centers, Exempt, & Family Child Care

9



10



11



12

WHOLE Community Approach Fundamentals

- 1** UNDERSTAND Opportunities & Desired Outcomes
- 2** SUPPORT Existing Child Care Business Owners & Operators
- 3** Be INTENTIONAL about Adding Child Care Capacity



13

13

What's the Win? Outcomes.

Blooming Prairie, MN Population 1,939



Over 100 New Quality
Child Care Spaces

Welcome!

Where our children's
opportunities are endless






14

14

#DareToDreamBigger






Jeff Andrews
President

jeff@businessofchildcare.com
844-444-5602



15

15



16

WHAT IS STEVENS INDUSTRIES

- Founded in 1956 by making wood products in a two-car garage, evolving into 2 Effingham County facilities with over 700,000 sq ft under roof (or almost 17 acres) with more than 500 employees.
- Largest manufacturer of commercial casework and architectural millwork in the United States.
- In addition to quality casework, architectural millwork, and award-winning textured woodgrain panels, Stevens also offers specialty lines of laboratory casework and furniture, music and instrument storage, and childcare furniture.
- Specialty brands include Stevens Advantage, StevensWood, Tot Mate and I.D. Systems.

17

WHY A CHILDCARE FACILITY?

- Employees were struggling to find affordable and reliable childcare
- Causing turnover of employees
- Desire to help our employees
- Family oriented
- 100% Employee Owned (How can we help our owners?)

18



IDEAS TO REALITY

- Todd Wegman's vision for years
- Started with an anonymous employee wide survey to gauge employee interest
- Tour other corporate owned childcare facility
- Discussion with local daycare owners
- Selecting our childcare director, Charly Orenkowi
- Naming the facility Tot Mate Central
- Next steps: select teachers for Tot Mate Central, employees officially enroll children, and open the facility September 2022.

19





GOALS AND OBJECTIVES

- Provide a world class childcare facility to our world class owners
- Employee satisfaction
- Employee retention
- Ease the stress of finding childcare
- Assist with making childcare affordable

20

QUESTIONS

- Contact Sarah Zerrusen at sarahz@stevensind.com or (217) 857-7102

21

Potential Childcare Assistance for Business & Employees

Presented by:
Matt Cekander, CPA
Doehring, Winders & Co. LLP
May 26, 2022

22

Doehring, Winders & Co. LLP
Matt Cekander - Partner

- Earned B.S. in Accountancy from Illinois State University in 2001 – graduated Summa Cum Laude
- Over 20 years accounting, auditing, financial and operational experience in public accounting and private business.
- Experience in serving clients across industries, including:
 - Construction
 - Real Estate
 - Manufacturing
 - Distributors
 - Professional Services

23

Potential Tax Credits for Childcare - Business

Childcare Facilities
Form 8882
Maximum of \$150,000

Childcare Resource & Referral – 10%

Dependent Care Flexible Spending Accounts

24

Potential Tax Credits for Childcare - Employees

- Childcare (0 – Preschool) - Form 2441
- Dependent Care FSA - up to \$5,000
- Child Tax Credit Reminder

25



Matt Cekander, CPA
Doehring, Winders & Co. LLP
Certified Public Accountants
400 W Jefferson Ave
Effingham, IL 62401

217-342-0377
www.DW.cpa

**DOEHRING, WINDERS
& Co. LLP**
CERTIFIED PUBLIC ACCOUNTANTS

26

Thank you!

BUSINESS NAVIGATOR ALLIANCE
OF SOUTHWESTERN & SOUTHEASTERN ILLINOIS
www.ILBusinessNavigators.com

COLES Together
CHAMBER & ECONOMIC DEVELOPMENT

SULLIVAN ILLINOIS
CHAMBER & ECONOMIC DEVELOPMENT

CCDA
Central Cities
Development Association

CLARK COUNTY
CHAMBER OF COMMERCE

PEDCO

The Alliance
Effingham Regional Growth Alliance

Coles County Contact:
Angela Griffin
217-258-5627
angela@colesstogether.com

Moultrie County Contact:
Laurie Milner
217-728-4223
director@sullivanchamber.com

Crawford County Contact:
Reza Shiner
618-546-1412
rshiner@crawfordcountyll.com

Clark County Contact:
Nora Swalls
217-826-2034
nswalls@marshall-il.com

Edgar County Contact:
Bob Colvin
217-465-5306

Effingham County Contact:
Courtney Yockey
217-342-4214
cyockey@groweffinghamcountyll.com

27
